

Ensure the safety of your drinking water by checking for lead pipe!

Indiana Finance Authority
LEAD INVENTORY
TECHNICAL
ASSISTANCE
PROGRAM

CHECK YOUR WATER SERVICE LINE



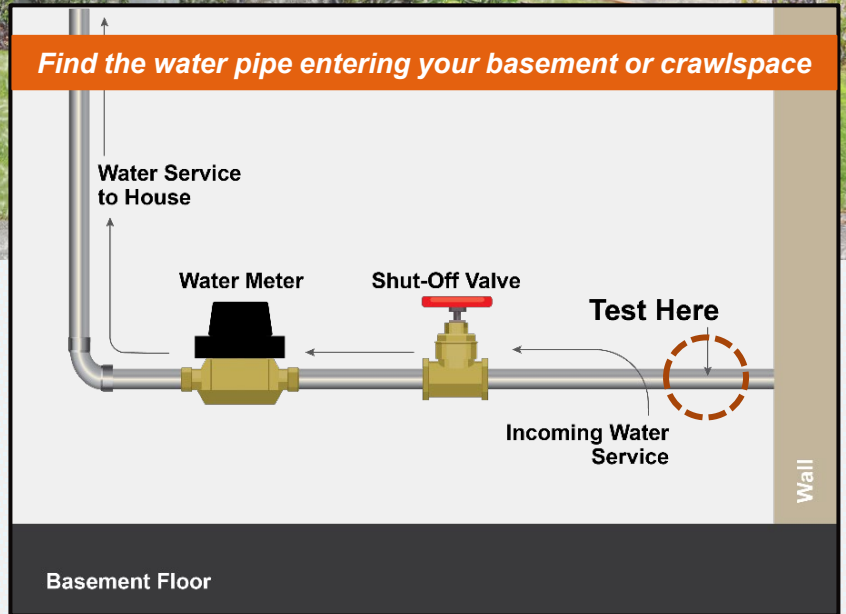
LEAD

Gray or dull silver color. It's a soft metal easily scratched with minimal force.

 Magnet Test - Not magnetic

 Turns shiny silver when scratched with keys/coin

Find the water pipe entering your basement or crawlspace



GALVANIZED

Gray or dull silver color. Can be dark grey or rust colored color due to oxidation /corrosion.

 Magnet Test - Is magnetic


 Silver when scratched

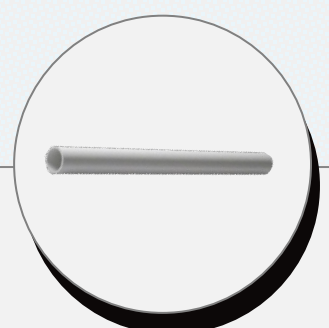


COPPER

Distinct reddish-brown or orange color. Corrosion may cause a green or blue patina on the surface.

 Magnet Test - Not magnetic


 Copper when scratched



PLASTIC

White, grey, blue or black with smooth texture

 Magnet Test - Not magnetic

 No change in underlying pipe color when cleaned surface is scratched

Report Your Results to Your Local Public Water Service Provider



VISIT INH20.ORG/LITAP TO LEARN MORE

LITAP is a free technical assistance program delivered by the Alliance of Indiana Rural Water and Arcadis.



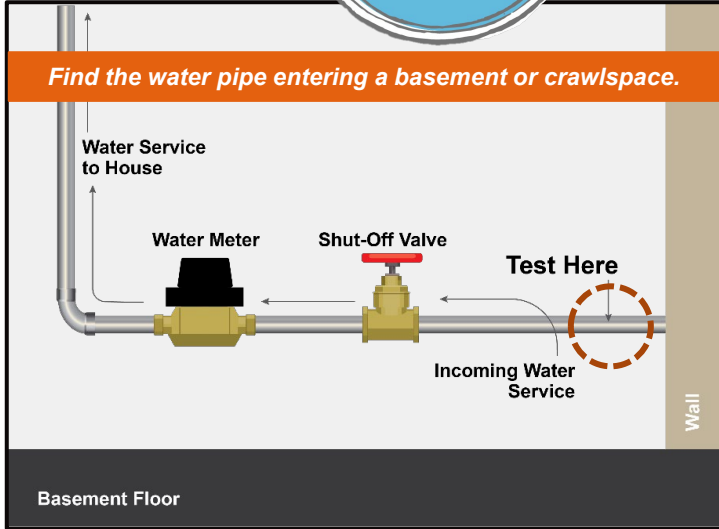
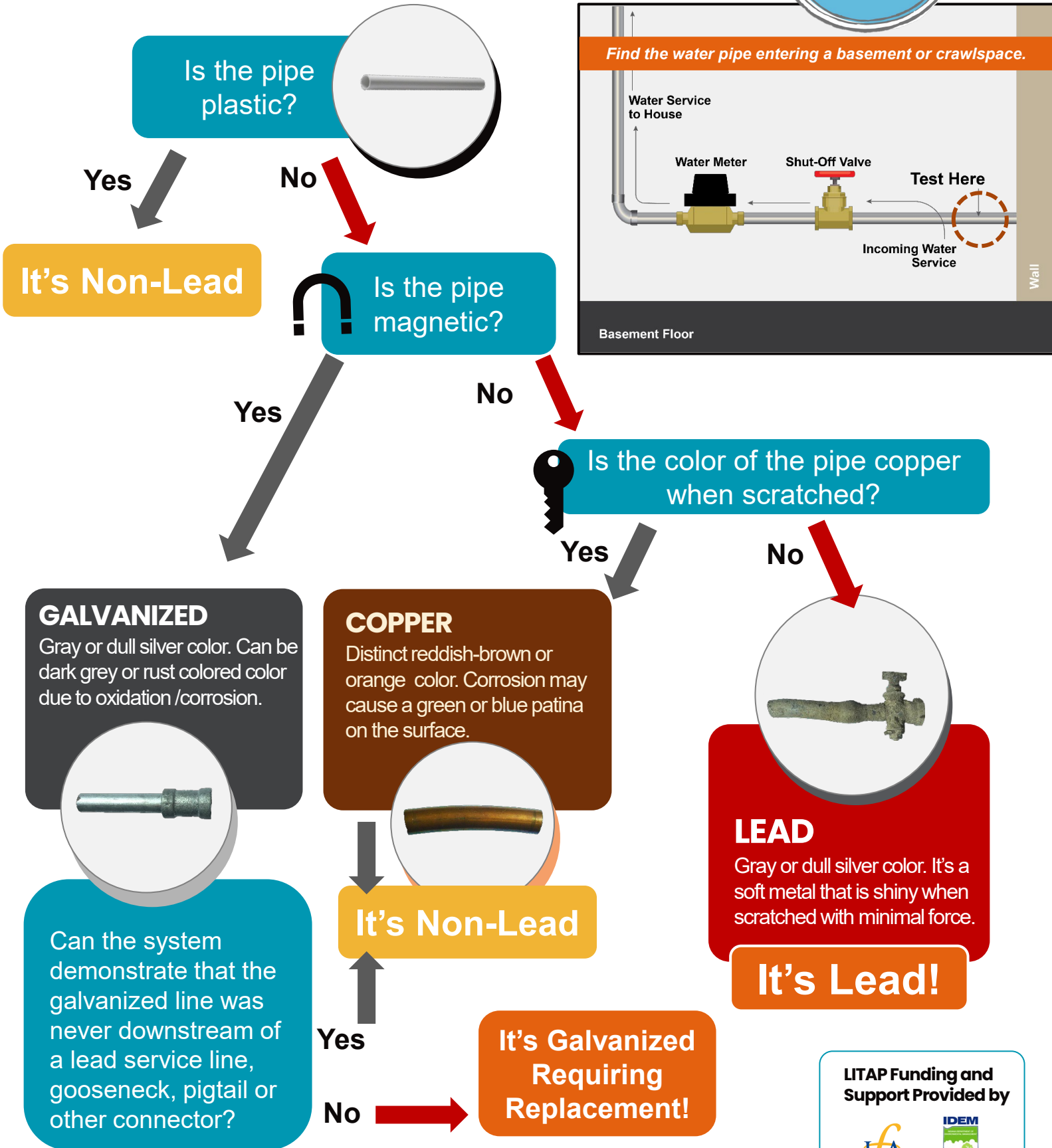
LITAP Funding and Support Provided by





Visual Inspection Decision Tree

How to Distinguish Lead Pipe



GALVANIZED
 Gray or dull silver color. Can be dark grey or rust colored color due to oxidation /corrosion.

COPPER
 Distinct reddish-brown or orange color. Corrosion may cause a green or blue patina on the surface.

LEAD
 Gray or dull silver color. It's a soft metal that is shiny when scratched with minimal force.

Can the system demonstrate that the galvanized line was never downstream of a lead service line, gooseneck, pigtail or other connector?

It's Galvanized Requiring Replacement!

